

*Who are the  
evaluation  
advocates in higher  
education and  
what do they offer  
to the sector?*



*This event is hosted on the Zoom  
'meeting' platform.  
Please keep your microphone on  
mute during the presentations.  
If you are able, we would love to  
see you on camera!*

The presentation section of this event will be  
recorded.

EVALUATION  
COLLECTIVE

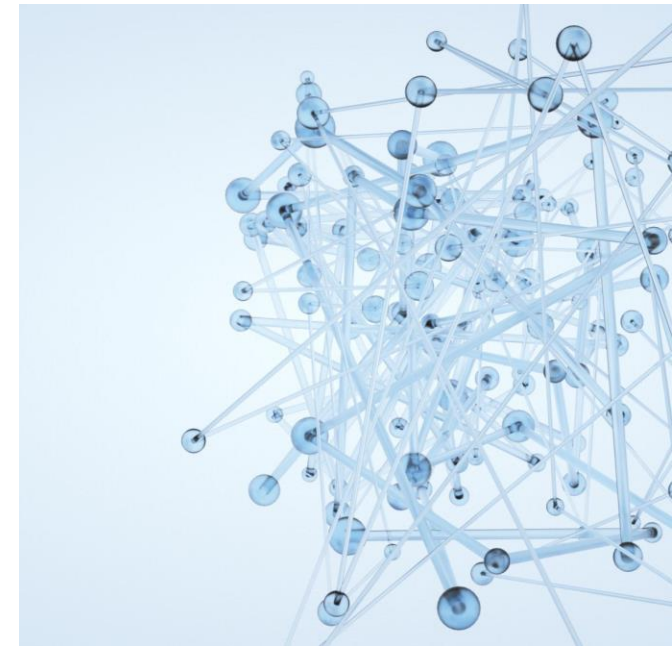
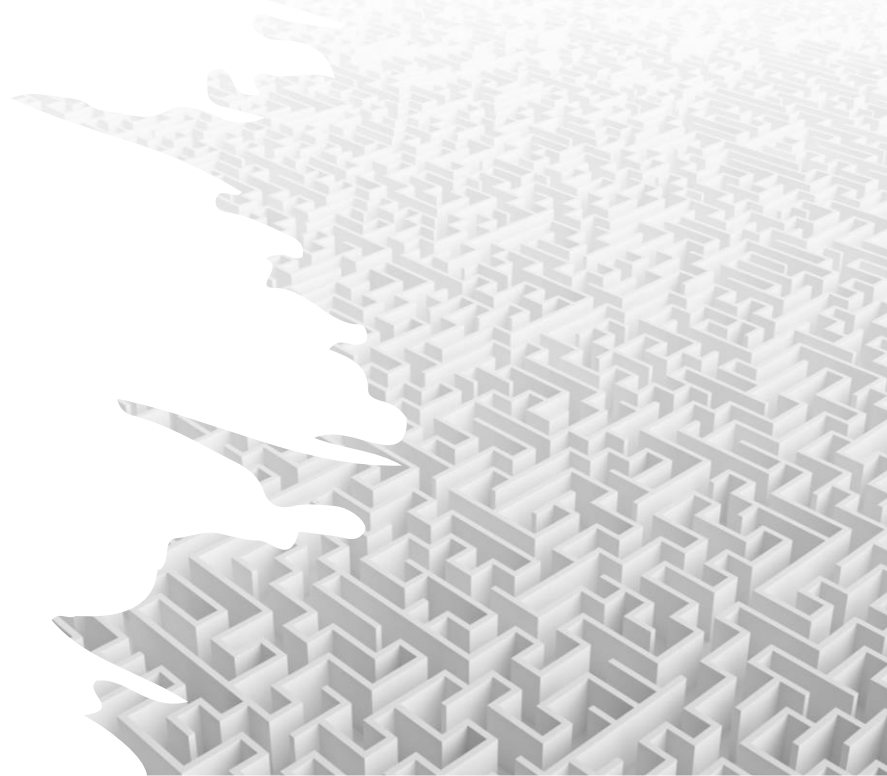
# Agenda

Introductions

Lightening presentations

- SCAPP
- TASO
- NERUPI
- SEER/Applied Inspiration
- FACE
- QAA
- Scottish Enhancement Theme Evaluation
- NEON (slide only)
- Evaluation Collective

Q&A



# Introductions

## Defining Evaluation

The Evaluation Collective defines evaluation as an approach which helps to **understand and explore what works and doesn't work in a given context and is of value to stakeholders**. The aim of evaluation is actionable evidence-informed learning and continuous improvement of process and impact.

## Evaluation Advocacy

The Evaluation Collective takes the position of advocates of evaluation. The scope of our advocacy spreads **throughout access and participation work in higher education** ... Our Manifesto seeks to generate support for those seeking to understand the impact of their current and future activities and **develop confidence** through our advocacy.

*Who are the evaluation  
advocates in higher  
education?*

EVALUATION  
COLLECTIVE



# SCAPP – Scotland’s Community of Access and Participation Practitioners

## Scottish Framework for Fair Access

### SCAPP Working Group: Evaluation and Research

- Aims to build links between **research, evaluation and practitioner communities**
- Identified evaluation capacity gaps - **Time, knowledge and expertise, resource**
- Engaging the community and building capacity through -
  - **Delivering online events and workshops**
  - **Production of the SCAPP Widening Participation Evaluation Guide**
  - **Developing a Directory of Practice and Expertise**
  - **Setting up the SCAPP *Evaluation Matters* Community of Practice**

[scapp@stir.ac.uk](mailto:scapp@stir.ac.uk) [www.fairaccess.scot](http://www.fairaccess.scot)

# Introduction to TASO

**Our vision is to  
eliminate  
equality gaps  
in higher  
education  
within 20 years**

**Evaluation training:** M&E Framework and online training webinars

**Evaluation guidance:** Research ethics, small n, survey design & validation

**Evidence toolkit:** pre-entry, post-entry, post-HE

**Research partnerships:** across four research themes

**Who?** Practitioners, researchers, evaluators, senior leaders, policymakers

# Community of praxis

- Practitioners, academics evaluators & managers involved in higher education access, participation & progression
- Events for sharing initiatives and evaluation strategies
- Web-based resources and toolkits for learning
- Working groups
- Capability framework combining theory, practice & policy
- Steering Group & Academic Advisory Board
- Institutional membership allows all staff to participate
- Subscription model £1,650 p.a for HEIs over 3000 fte and UniConnect; for smaller organisations under 3000fte £660

Visit [NERUPI](http://www.nerupi.co.uk) for more info on the framework. [www.nerupi.co.uk](http://www.nerupi.co.uk)



# Introduction to SEER: Specialist Evidence, Evaluation & Research

*An independent, efficient, expert-led solution to delivering evaluation and research commitments for Access and Participation*

## The SEER Service

- Supports smaller, specialist and new providers meet OfS regulatory requirements relating to data analysis, monitoring, evaluation and research for access and participation
- Est. 2019 providing an independent, effective and efficient model of collaborative evaluation and research
- Works across the whole lifecycle of access, transition, success and progression. Members can weight activity in a particular area(s)
- Adopts a capacity-building and tooling up approach, as well as delivering services

## 6 Key Service Areas

1. Access and participation related advice, from regulatory compliance to value-adding
2. Access and participation planning, monitoring and reporting
3. Data capacity, collection, analysis and reporting
4. Evaluation (design, tools, data collation and analysis, reports, recommendations)
5. Research and insights (design, tools, data collation and analysis, reports, recommendations)
6. Communications, networking, collaboration and sharing findings

## Get involved

We are currently accepting new members! To discuss full annual membership, or specific research and evaluation projects or training and development needs, contact Dr Ruth Squire, Head of SEER [ruth@appliedinspiration.co](mailto:ruth@appliedinspiration.co)



APP Regulation  
Provider priorities  
Influence OfS  
Collaboration



19 Members



Engage Boards,  
VCs, Operational  
Staff & Students  
Liaise with OfS



Members have  
diverse levels of  
prior expertise

# FACE (Forum for Access and Continuing Education)

- Facilitates the exchange and dissemination of information and practices in WP
- Long established network (1993) for access and participation practitioners, researchers and policy makers.
- Annual publication showcasing early career research and conference which offers platform to present evaluation and research, regular blog for think pieces
- Special Interest Groups: APP SIG considers policy interpretation and response
- Looking to develop further “wings” for collective support and lobbying
- Membership is broadly WP leaders, Uni Connect, third sector, specialist researchers in WP, advocates, early career practitioners and researchers
- Aim to broaden membership to represent a collective voice
- FACE is for colleagues who want to move the sector forward – either by adding to understanding or taking it back to their own setting
- Join us! [www.face.ac.uk/membership](http://www.face.ac.uk/membership) or come to the conference, or write a blog!

- The QAA - what we do
- How can we help you?

Using data to enhance outcomes

Tapping into the wisdom of students

Effective evaluation

Data Dictionary

Evidencing Value

Training and professional development in evaluation

Email: [membership@qaa.ac.uk](mailto:membership@qaa.ac.uk)

Access all of the above via: [membershipsources.qaa.ac.uk](http://membershipsources.qaa.ac.uk)

**Capacity-Building**

**Who Engages?**

**Knowledge & Experience**

**Involvement?**

**Universal Evaluation Framework**

<https://www.enhancementthemes.ac.uk/evaluation-of-the-enhancement-themes>

# QAA Scotland: 20 Years Enhancement Themes' Evaluation

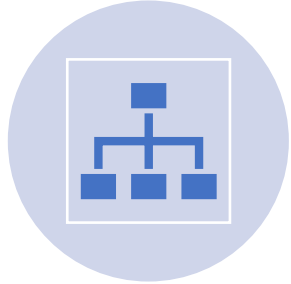


QAA  
Scotland



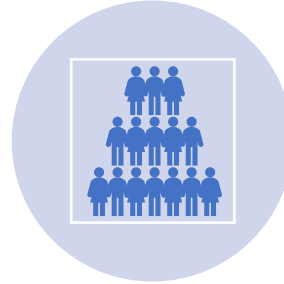


## NEON Establishing Evidence and Measuring Impact Working Group



### **How does your organisation/group help build evaluation capacity across the HE sector?**

The [NEON Establishing Evidence and Measuring Impact Working Group](#) is an on-going forum, led by NEON members, that is actively trying to support and shape how we prove the worth of our work. The working group advocates to policymakers, in particular The Office for Students, regarding how they can support those tasked with evaluation.



### **Who tends to engage with your organisation/group and who might be missing?**

A wide variety of stakeholders attend our working group meetings. From practitioners in access, those responsible for evidencing the success and progression stages of the student lifecycle to researchers and dedicated evaluators. The main connection amongst these groups of individuals is their interest in evaluation and desire to share practice amongst other likeminded individuals.



### **Is your organisation/group aimed at a specific level of prior evaluative knowledge or experience?**

The working group is aimed at anyone with an interest in evaluation- prior knowledge or experience is not a prerequisite of group membership. We actively encourage participation in the group from a range of stakeholders- especially those who are eager to learn from others and establish new connections from across the sector.



### **How can people get involved with your organisation/group?**

Attendance at the NEON Establishing Evidence and Measuring Impact Working Group is FREE to NEON members. Non-members are also welcome to attend but there is a fee of £80 per meeting.

Emma Church, EMWPREP Manager and NEON WG Chair,  
 [e.church@lboro.ac.uk](mailto:e.church@lboro.ac.uk)



**EMWPREP**  
East Midlands Widening Participation  
Research and Evaluation Partnership





# EVALUATION COLLECTIVE

## Who are we?

- Cross-sector group of like-minded evaluation advocates working to enhance HE student outcomes.
- Focus on ‘participation’ – ensuring all students thrive at university.

## Our aims

- Provide alternative evaluation voices to the dominant evaluation discourse within HE. See [here](#) for our Evaluation Manifesto.
- Build sector confidence in evaluation.
- Support the development of an evaluatively literate HE sector.

## How can I get involved?

- For the latest Collective information, just sign up to our [mailing list](#).
- For further information, email [Liz Austen](#) or [Rachel Spacey](#).

A large, horizontal, pink brushstroke graphic with a textured, irregular edge, resembling a paint stroke. It is positioned on the left side of the slide.

# Q&A

Dr Rachel Spacey will now Chair a Q&A session.

Attendee are invited to ask questions of the panel presenters by using that chat function or raising their hand.

*Thank you!*

Look out for more events in Dec  
and the new year.

@evaluation\_c

@ lizaustenbooth  
l.austen@shu.ac.uk

